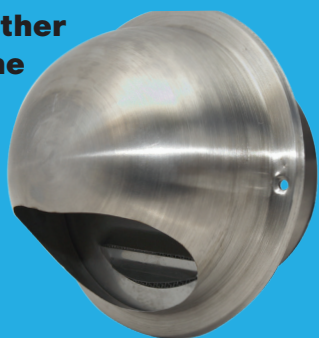


Stainless Steel Weather Dome



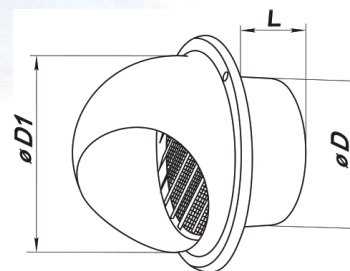
Stainless Steel Weather Dome

Application

- Decoration of exhaust vents of public, residential and industrial ventilation.
- Applicable for ventilation systems.

Design

- Made of stainless steel.
- Directing vanes and an insect screen included.
- Fixing with screws.



ESC Code	B	L	Flange (OD)
WD100SS	133	52	100
WD125SS	165	52	125
WD150SS	192	62	150

SS Cone Diffuser



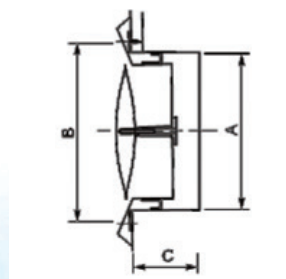
Stainless Steel Cone Diffuser

Application

- For supply & exhaust ventilation.
- Used to arrange correct air circulation.

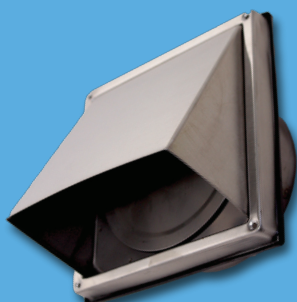
Design

- Made of stainless steel.
- Special aerodynamics.
- Adjustable by rotation.
- Easy to install.



ESC Code	A	B	C	Flange (OD)
VCD100SS	97	118	52	100
VCD125SS	120	141	52	125
VCD150SS	145	162	62	150

SS Cowl Square



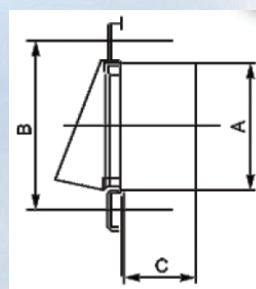
Stainless Steel Weather Cowl

Application

- For exhaust ventilation.
- Wall mount.

Design

- Made of stainless steel.
- Easy to install.



ESC Code	A	B	C	Flange (OD)
VWC100SS	97	137	52	100
VWC125SS	120	167	52	125
VWC150SS	145	167	62	150