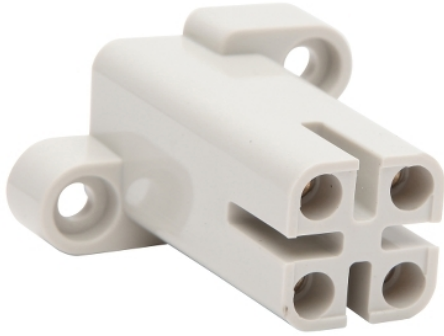


## Product data sheet

### Characteristics

# PDL3S130GY

## Enclosure Mounting Pillar; Grey



### Main

Range of product	56 Series™
Product or component type	Enclosure
Material	PC (polycarbonate)

### Complementary

Colour tint	Grey
Surface finish	Gloss
Mounting mode	Surface mounted
Quantity per set	Set of 300
Type of packing	Carton

### Packing Units

Package 1 Weight	17.000 g
Package 1 Height	3.200 cm
Package 1 width	4.600 cm
Package 1 Length	5.600 cm

### Offer Sustainability

EU RoHS Directive	Under investigation
-------------------	---------------------

The information provided in this documentation contains general descriptions and/or technical characteristics of the performance of the products contained herein. This documentation is not intended as a substitute for and is not to be used for determining suitability or reliability of these products for specific user applications. It is the duty of any such user or integrator to perform the appropriate and complete risk analysis, evaluation and testing of the products with respect to the relevant specific application or use thereof. Neither Schneider Electric Industries SAS nor any of its affiliates or subsidiaries shall be responsible or liable for misuse of the information contained herein.